

The Nineteenth Joint
Haby-Lockhart-Ross-Speck
Angora Goat Production Sale

Saturday, July 15, 2006
1:00 p.m.
Kerrville, Texas



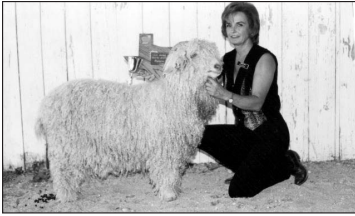
Hill Country Youth Exhibit Center

WELCOME TO

The Nineteenth Joint
Haby-Lockhart-Ross-Speck
Angora Goat Production Sale

**Conducted By Auctioneer
Mark Tillman**

This year's catalog is dedicated to
**Beverly Short and
 Werner and Earline Lindig**



Beverly Short's family got involved with Angora goats in 1980 through their two daughters' (Tana and Terri) 4-H projects in Bandera. Beverly continued breeding and showing the goats. They raised several champions at TAGRA and the Dallas Fair. Bob and Cindy Sites are quick to give Beverly credit for selling them

the doe that won the prestigious Davis Special award. She was secretary of the Heart of the Hills Show & Sale for several years. In 2002 she purchased some Scottish Highland Cattle. But for health reasons, she started selling off her Angora breeding herd in 2004. Last year Beverly stepped up to be Secretary of TAGRA – always being supportive and being part of the Angora team. Tana Jurecqzhi is still nearby with her barrel racing. Terri Trull lives in Brady where she works as a probation officer and her family operates a farm and ranch. Beverly and Joe taught the girls to stay with their animals. Beverly, we in the Angora business want to say, *"Thank you!"* and we shall look forward to your continued participation.

IMPACT! Indeed **Werner and Earline Lindig** have made a tremendous difference in the extension service, the livestock industry, and successes of many students who have made a ripple effect far beyond the Texas boundaries. They moved to Bandera in 1956 and retired there in 1980. But the enthusiasm kept on growing as Werner remained active with sheep, hunting and developing a large volume mohair grading service. Just ask David Whitworth, Justin Stieler, & Stephen Brawley. Frank Craddock said, "Earline is a sweet lady who supported the family projects all the way. No one loved children more than Werner. He is the one person who had the most to do in shaping my professional career." Freddie Flack said, "Werner was a great teacher, livestockman and friend." Preston Faris was quick to say, "He is the one who helped me develop the passion for livestock evaluation! Earline was wonderful to all of us." Beverly Short, "Lindig really focused on the young folks." Jack Groff, Billy Kidd, Curtis Henderson, Tom Syfan and Nina Langford as well as others will certainly attest to the competitive discipline of the Bandera 4-H teams year after year.

The Lindigs have four daughters and sons-in-law. 1) Kathy Hunt in Seguin, whose daughters just recently won the state 4-H wool fabric demonstration. Earline bubbled with joy. 2) Janna is an attorney in Houston with intentions of coming back to the Hill Country. 3) Diane Tobin in Bandera operates the Equestrian Lodge, and 4) Maxine Lautenberg lives in Saratoga Springs, NY. It is easy to see that the family

tradition will live on and be respected by so many friends, producers and former students.

HLRS wants to thank our family members who help with the sale and its preparation but also other friends who have been so helpful over the years including Mac Gilliat, Steve Nelson, Mike Mason, Ed Holland, and Kent Mills.

BREEDER'S GUARANTEE - Should any goat be proven to be a non-breeder its first breeding season, please notify the particular breeder.

Common sense and fairness by both the seller and buyer should prevail. If the animal has not been neglected, fed excessively, exposed to a disease after the sale, loaned out, or sold to another party, etc., the animal may be returned for replacement after agreement by the seller. No guarantee can be made as to how the goat will cross with your goats. The goats should be allowed adequate time to adapt to their new location after transportation.



TERMS are cash or check. Should any dispute arise from the taking of bids, the auctioneer's decision will be final.

HEALTH CERTIFICATES - Any potential buyer should check in advance with his state's veterinary health requirements and be prepared to make necessary arrangements.

REFERENCE SIRES

A.B. Hobson & Sons Martysford Stud

76 - This buck was sired by K131, the twin to the Martysford buck that sold for 110,000 Rand, a world record price. He combines the size, muscle, thickness, and correctness of a superior meat goat with a typical soft South African mohair fleece.

422 - This buck was Mike Hobson's selection for the partnership. His sire was an outstanding producer for the Hobsons. Phenotypically this buck is well balanced but not flashy. However, he is a "blue blood" stud, he consistently produces quality kids, both straight South African and "cross".

04 - In 1994 Mike Hobson, Fred Speck, and Hayden Haby returned to South Africa and selected this buck for the second importation. His conformation is near perfect. His offspring have fine fleeces.

80 - This buck was also selected by Hobson, Speck, and Haby for the second importation. His sire was a Thorn Park buck purchased at the dispersal sale by A.B. Hobson and Brett Wienand. Haby really likes this big, tall, long bodied buck.

Haby, Lockhart, Ross, Speck

HLRS 60 - Out of 80 and a "Lockdale" doe imported from South Africa, this buck combines a long stapled fleece with a very correct body conformation. The yearling does on Laura Speck's 1999 Show Circuit were both out of this buck. His two sons at the Sonora Test had the longest staple length in 1999.

HLRS 606 - This buck has an excellent body conformation with a thick spring of ribs, level rump, and he walks wide. He also carries a uniform, ringlet, yearling fleece. He is out of HLRS 153 (an 04 son) and a Thornpark stud doe #81.

Lockhart Ranch Sire

GL 2271 - This buck has a very correct square body and a dense, uniform, ringlet fleece. His sire is HLRS 60. His dam is out of a 100% Texas bred Lockhart doe that goes back to "Bill" and HLRS 36, a son of Hobson 76 (great body).

The three bucks we have to offer have been out in the pasture until recently. They were shorn in late March.

Ross Ranch Sires & Comments:

Our kidding starts about the third week of March thru early May. Most of us in the registered goat business make notes about our individual animals. Listed below are some of the codes that we use in our records. For those who want this info, some are reflected on our individual lots in this catalog. We "bag" out all of our does each year (even the commercial ones) since the udder teat structure play a very important role in % kid crop raised in the pasture. Likewise, we place a strong emphasis on scrotal size, evenness & skin/mohair cover for fertility. Staple length is measured on the side, rump & britch.

#1= excellent #2= good #3= average #4=poor

FA = fine adult

Un = uniformity

Y = yield - #2 prefer some lanolin

AK = average kid from adult

CMT = crooked mohair tail

KID= low kid

B = overall body

SK = super kid

HT = heart, chest

Scrt = scrotum size & inches split

WW = walks wide

Ud = Udder/small teat

YG= regular, low yrl

K = kemp - chalky

FY = finer young goat/yrl

SMT = straight, mohair tail

RAT= slick, rat tail

FK=- fine kid

HN = horns

SSK = super, super kid

Rib = spring of ribs

HK = width & freedom of cow hock

Toes = toes

JBR 9735 - He has a terrific body and mohair tail like his sire, Hobson 04. He indexed in the top ten at the 1998 P.T. We brought him home to

breed because he was taller and finer than his sire. His dam is a medium sized Ross - Kuebel doe (ten year old and has raised a kid every year); she was by the great fine haired Kuebel 814.

JBR 9946 (75% TX) - He was in the top 10 PT index in 2000. His offspring have continued to perform well including the highest indexing buck in 2003. He is a big open faced, thick buck with a quality fleece. His sire was FLS 1516 (by FLS 607 by 404). 9946's mother was sired by HLRS 28. JBR 0125 – Some may remember lot 48 in the 2002 sale. We retained a one – half interest in this son of HLRS 60 because 0125 JBR had the finest, most uniform fleece with an open face and full large scrotum of any South African kid that we had raised. His dam was a granddaughter of Hobson 76 which helped reinforce body structure.

JBR 0152 - Is rich in South African breeding. His open faced mother, sired by Hobson 04 and out of a Ross doe, had the most beautiful uniform, “pencil” ringlet that I have ever seen. The sire, (show potential, was well covered) was a P.T buck by HLRS 60 and out of a Ross doe by HLRS 28.

JBR 0160 (50% TX) - A great combination of a definite open face, near perfect horns, quality mohair, size, and body structure. Fred & Ed Holland really liked him as a yearling. He was sired by a JBR 9804 and his dam was sired by HLRS 25.

BL 2226 (100% TX) - This Lockhart buck was purchased by Clayton Crider in our 2001 sale. He was Reserve Champion buck @ TAGRA in 2005 at 5 years of age. His offspring presented in this sale demonstrate his consistent quality genetics. He still has a uniform kid hair fleece, a large full scrotum, an open channel face cover, and he walks wide. He was sired by FLS 1810 and is out of a Lockhart doe that goes back to a line bred doe by their champion fine haired, “Bill” when “little” Ben was showing goats in the 80's. Thanks Clayton, Ben, and Fred.

Shearing Dates

Lockhart – late March 06

Ross – Jan 23 unless 2-28 or 3-3

Speck – Jan 15-16

Even though we breeders have similar standards and breeding programs, the animals have been raised in different environments, management and kidding dates. Please make notes of these differences and make visual comparisons of individual animals from within that specific herd.

Speck Ranch Sires:

H-584 - "Superfine" - This legendary Haby stud, along with H-787 "Son of Champ", has provided the foundation of our herd. Both bloodlines have produced champions for Speck Angoras at all major shows in 1990 through 1999.

FLS2-404 - This buck bred true and produced super kids. He had excellent conformation with a wide spring of ribs, wide hindquarters, straight back legs, and strong typical horns. He carried a fine, ringlet yearling grade fleece and was uniform from neck to breech. His sire is 4P-210, grand sire is FLS8-43, and great-grand sire is H-787.

FLS1-249 - This was one of the finest fleeced, most uniform bucks we had. His sire is FLS9-68 and his dam, FLS9-76, is a daughter of "Superfine". In 1994 he was the first place Aged Buck at the Kerrville, San Antonio, and Houston Jr. Stock Shows.

FLS6-1382 - When Hayden Haby & Jesse Lockhart saw this buck as a yearling, they called him the "perfect buck". He has correct horns, thick body, and a fine ringlet long stapled fleece with kid hair. He is a son of 404 and has produced many excellent kids.

FLS7-1593 - Out of HLRS 422, this 1/2 TX buck is long bodied, big, and has a dense ringlet fleece.

FLS8-1810 - A son of 1382, this buck still carries a fine ringlet kid fleece and has produced many excellent kids. He is one of our top producers. His mother is out of 249 and was on the show circuit. She won the Grand Champion Goat of Show in Kerrville in 1997.

FLS8-1893 - This is a big robust son of 1382 that won Champion Buck as a kid at four major shows in Laura's last year of showing. He has excellent body conformation and a fine uniform fleece

FLS9-2062 - Out of Hobson 422, this is an open faced, upstanding alert buck with a fine uniform fleece and excellent conformation. His mother is a fine fleeced doe sired by FLS2-404.

FLS9-2224 - A son of FLS6-1382, this is a showy, big, extremely fine fleeced, uniform ringlet haired buck.

FLS0-2350 - This is a fine-haired, showy buck, 100% Texan, and is a full brother to FLS8-1810. He also produces good kids.

FLS0-2392 - A son of 1810, this uniform-fleeced buck's dam is out of FLS1-249.

FLS0-2593 - This 1810 son is 100% Texas bred and has produced excellent kids. He has a super-fine, ringlet fleece.

FLS0-2624 - This buck is 50% South African out of HLRS 28. He has an excellent conformation with thick spring of ribs and a square hip. His fleece is ringlet, fine and uniform. The dam is 404 bloodline.

FLS0-2671 - This is a son of 404 with an excellent conformation. He is wide-bodied, level rumped, walks wide, and is showy with a mohair tail. He produces excellent offspring. He is 75% Texan and carries a fine fleece. We credit his body conformation to both his South African grandfather (Hobson-04) and FLS2-404.

FLS0-2763 - This son of FLS8-1810 is upstanding, robust, and carries a fine fleece. In 2004 we kept two of his offspring as stud bucks.

FLS1-2844 - A full brother to FLS8-1810 and FLS0-2350, this son of 1382 is also a consistent producer of excellent offspring.

FLS1-2898 - A son of FLS9-2224, this is our largest stud buck with an excellent thick body and ringlet uniform kid fleece. I own 1/2 interest in this buck with the Earwood family. His body can be attributed to his 1/2 S.A. mother out of HLRS-422. He produces excellent kids.

FLS2-3136 - This showy buck combines a beautiful fleece with an excellent body conformation. He is a son of FLS0-2593. He is 100% Texan.

FLS3-3407 - This 100% Texas bred buck is out of FLS1-2763. He is a large buck with an open face and a fine fleece.

FLS3-3505 - This son of FLS1-2898 has produced great kids. He is big, robust, open faced, and has a ringlet, kid fleece. We kept two yearling bucks this year that he sired.

**FOR FURTHER INFORMATION ABOUT THE REFERENCE SIRES OR
ANY OF THE GOATS OFFERED IN THIS SALE, PLEASE CONTACT:**

Hayden Haby
(830) 278-1965

Ben Lockhart
(830) 234-3592

Joe David Ross
(915) 387-3163

Fred L. Speck
(830) 895-1234
(830) 896-2810

YEARLING DOES

Lot#	GOAT ID	SEX	SIRE	DAM	SELLER	BREED	PRICE
01	FLS5 4231	Doe	FLS0 2392	FLS9 2115	Speck	87.5%TX	_____
This doe displays correct body conformation. She has a level rump. Her fleece is ringlet, long stapled, and fine.							
02	FLS5 4270	Doe	FLS0 2624	FLS5 1109	Speck	75%TX	_____
This very large doe is deep bodied, has correct horns, a level rump, and a thick spring of ribs. Her dense fleece is uniform and shows good luster.							
03	FLS5 4298	Doe	FLS1 2844	FLS1 2749	Speck	100%TX	_____
A large showy doe, she has a level rump, thick spring of ribs and lots of hair. Her fleece is long stapled and ringlet. Her mother is a 607 granddaughter.							
04	FLS5 4101	Doe	FLS3 3505	FLS0 2404	Speck	87.5%TX	_____
This doe has a correct body that is thick, long, and level. She is showy with a mohair tail and a beautiful uniform, ringlet, kid fleece. Her mother is out of 1382 and this year's sister is a keeper doe.							
05	FLS5 4067	Doe	FLS3 3407	FLS0 2476	Speck	75%TX	_____
This showy doe has a mohair tail and a level rump. She has a uniform ringlet fleece. Her dam is a 404 granddaughter.							
06	JBR 0573	Doe	JBR 0160	JBR 9708	Ross	50%TX	_____
A mid April kid from an older doe. This sale doe is well covered and fine, with extra staple & density, B 1. The dam is by S. Afr. 118 W.							
07	FLS5 4071	Doe	FLS1 2898	FLS8 1900	Speck	87.5%TX	_____
This big, showy doe with a mohair tail has a long stapled fleece that is soft and high yielding. We kept her twin sister for our breeding herd. Her mother is a show doe out of 1382 and a Pember doe.							
08	FLS5 4083	Doe	FLS1 2844	FLS8 1880	Speck	100%TX	_____
This large doe has a uniform, dense, soft fleece. Her mother's grandsires are 607 and 249.							
09	FLS5 4273	Doe	FLS8 1893	FLS3 3642	Speck	75%TX	_____
This showy doe walks wide and is level rumped. Her fleece is soft, ringlet, and long stapled.							

YEARLING DOES

Lot#	GOAT ID	SEX	SIRE	DAM	SELLER	BREED	PRICE
10	FLS5 4155	Doe	FLS9 2224	FLS2 3182	Speck	100%TX	_____
This large doe has lots of hair with a long staple ringlet fleece. Her mother is a 607 granddaughter.							
11	FLS5 4139	Doe	FLS9 2062	FLS1 2728	Speck	75%TX	_____
This level topped doe has a dense, fine, uniform, ringlet fleece. Her mother is a 1382 daughter.							
12	FLS5 4079	Doe	FLS0 2392	FLS8 1916	Speck	100%TX	_____
This alert, upstanding, long bodied doe has a level rump and thick spring of ribs. She has a soft uniform fleece. Her mother is a 607 daughter. Her brother is Lot #65.							
13	FLS5 4194	Doe	FLS7 1593	FLS3 3494	Speck	68.75%TX	_____
This doe has a very dense fleece and will shear lots of hair. Her fleece is uniform in fineness and long stapled. She carries a level rump and mohair tail.							
14	FLS5 4258	Doe	FLS8 1893	FLS8 1892	Speck	100%TX	_____
This does carries an extra long staple length and will shear lots of hair. She has a soft ringlet fleece. She stands correctly on her hind legs and shows a level rump.							
15	FLS5 4060	Doe	FLS1 2898	FLS0 2682	Speck	75%TX	_____
This is the largest bodied doe in the sale. She has a level rump, thick spring of rib and a long deep body. Her horns are correct and she has a soft , uniform fleece with a beautiful ringlet on her neck. Her mother is out of 1382 and a full brother FLS3-3505 is one of our top breeding stud bucks.							
16	FLS5 4269	Doe	FLS1 2763	FLS1 2942	Speck	87.5%TX	_____
She has a level rump with a mohair tail. She carries extra long staple length and will shear lots of hair. Her fleece is uniform . Her mother is a 404 daughter.							
17	FLS5 4282	Doe	FLS8 1893	FLS2 3233	Speck	81.25%TX	_____
A showy doe, she is well covered with a long stapled, uniform fleece. She has a beautiful ringlet on her neck. She is long bodied and has a level rump.							
18	FLS5 4131	Doe	FLS3 3505	FLS2 3112	Speck	87.5%TX	_____
This showy doe has a mohair tail and a level rump. Her fleece is dense, long stapled, and ringlet.							

YEARLING DOES & YEARLING BUCKS

Lot#	GOAT ID	SEX	SIRE	DAM	SELLER	BREED	PRICE
19	FLS5 4208	Doe	FLS3 3505	FLS1 2816	Speck	87.5%TX	_____
This long, deep bodied doe has a thick spring of rib and a uniform high yielding, long stapled, soft fleece. Her mother is out of 2224.							
20	FLS5 4165	Doe	FLS9 2062	FLS2 3119	Speck	75%TX	_____
This medium sized doe has a thick spring of rib and a level rump. She has a uniform, fine, soft, ringlet fleece. Her mother is a 1810 daughter.							
21	FLS5 4313	Doe	FLS0 2350	FLS0 2396	Speck	87.5%TX	_____
With a very thick spring of ribs and a dense fleece she will shear lots of hair. She has a uniform, long stapled fleece. Her grand sire is Hobson 76.							
22	FLS5 4346	Doe	FLS0 2350	FLS6 1313	Speck	100%TX	_____
We like the fleece on this smaller doe. It shows very long staple length. It is ringlet, and fine. Her mother is a great granddaughter of Haby 787.							
23	FLS5 4289	Doe	FLS9 2062	FLS1 2845	Speck	62.5%TX	_____
This doe has a mohair tail, level rump, and walks wide. She will shear lots of hair with her long stapled fleece showing luster. Her mother is a 1810 daughter.							
24	FLS5 4222	Doe	FLS1 2763	FLS0 2410	Speck	75%TX	_____
This doe has a distinct ringlet, long stapled fleece and will shear lots of hair. She has a mohair tail. Her mother is a 404 granddaughter.							
25	FLS5 4295	Doe	FLS0 2350	FLS8 2010	Speck	87.5%TX	_____
This well covered showy doe has a soft, ringlet, fine fleece.							
26	FLS5 4325	Doe	FLS1 2763	FLS2 3155	Speck	87.5%TX	_____
This doe has a mohair tail and a dense, soft, ringlet, long stapled fleece with excellent luster. Her mother is an 1810 daughter. Her brother is Lot # 83.							
27	FLS5 4152	Buck	FLS2 3136	FLS2 3061	Speck	100%TX	_____
A big, long bodied buck with an open face, he carries a fine, uniform ,long stapled, ringlet, kid fleece.							

YEARLING BUCKS

Lot#	GOAT ID	SEX	SIRE	DAM	SELLER	BREED	PRICE
28	JBR 0559	Buck	BL 2226	JBR 0145	Ross	87.5%TX	_____
One of grandson Dalton Buchholz's show bucks. Shorn 2-28-06. Big, HN 1, UN 1.7, open channel face, Scrt. 1 +. His large fancy dam was sired by the big JBR 9735. See Ross Ranch sires for explanation of trait scores.							
29	GL 5515	Buck	GL 2271	GL 1927	Lockhart	37.5%TX	_____
His is a robust buck that travels well. He has a nice feel to a good uniform, ringlet fleece. He has a good open face but has shed some due to the heat.							
30	FLS5 4244	Buck	FLS0 2392	FLS8 2036	Speck	87.5%TX	_____
We consider this buck to be stud potential and debated keeping him. He has a beautiful, ringlet, dense, uniform, long stapled fleece. He has a full scrotum. We have several keeper does out of his mother. His brother is Lot # 51.							
31	JBR 0517	Buck	JBR 0160	JBR 0132	Ross	62.5%TX	_____
Bred to be a potential stud sire. Good size, a kid fleece, density, lanolin, well covered, UN 1.6, SMT, WW, Scrt 1 w/indent, B1. Both the dam and sire for 2 generations have well spaced horns. His mother is by the great FLS 1382. Her 10 year old dam is JBR 9659 who is the best bodied doe on the ranch and has Ud 1.							
32	GL 5511	Buck	GL 2271	DL 2250	Lockhart	50%TX	_____
An eye catching fancy buck that is well covered to the hoof. He has a correct square body like his sire. His uniform fleece has a nice feel with good ringlet and style and character.							
33	HLRS 5-735	Buck	HLRS 606	HLRS 477	HLRS	100%SA	_____
This is the finest fleeced South African buck we have ever offered. He carries a dense, uniform, fine ringlet fleece and has an open face. His sire has bred well for us on both Texas and South African does.							
34	FLS5 4253	Buck	FLS1 2898	FLS0 2471	Speck	87.5%TX	_____
This big buck has an open face, correct horns, and large testicles. We love his beautiful kid ringlet fleece. His mother is an 1810 daughter. His sister is one of our top yearling keeper does.							

YEARLING BUCKS

Lot#	GOAT ID	SEX	SIRE	DAM	SELLER	BREED	PRICE
35	JBR 0544	Buck	JBR 0125	JBR 9883	Ross	62.5%TX	_____
He is a specific-need buck for some one wanting to breed for the San Angelo Angora meat goat show. This buck is big, thick, open face, Scrt 1 +, HN 1, B 1, WW, SMT. His big mother @ 7 years was scored, FA, B 1, Ud 1, and is a granddaughter of Mr. Livability.							
36	GL 5504	Buck	GL 2271	GL 2213	Lockhart	50%TX	_____
This buck carries more oil and has a good ringlet and a fairly uniform fleece. He stands correctly and should make a nice commercial herd billy.							
37	FLS5 4160	Buck	FLS2 3136	FLS2 3217	Speck	87.5%TX	_____
We like the gorgeous, ringlet kid fleece with long staple on this buck. He has an open face, mohair tail, and is long bodied. His mother is an 1810 granddaughter.							
38	JBR 0549	Buck	BL 2226	JBR 0157	Ross	75%TX	_____
Impressive with stud potential. A twin. Good size, well covered, kid hair, soft, dense, UN 1.6, SMT, HN 1.6, Scrt 1+, B 1, and WW. His big, show doe dam is by JBR 9735 and she has the same mother as our good producing P.T. buck JBR 9946.							
39	FLS5 4326	Buck	FLS9 2224	FLS0 2397	Speck	87.5%TX	_____
This younger buck was born in April and is smaller. We really like his beautiful, dense, ringlet kid fleece. This year we kept his full brother as a stud buck.							
40	JBR 0560	Buck	JBR 0152	JBR 9991	Ross	50%TX	_____
Franklin Buchholz's show buck. Shorn 02-28-06. He is well covered, SMT, fine, UN 2.1, B 1 who carries himself very well, Scrt 1+ - 1, HN 1. His mother raises a kid every year - Ud 1.							
41	FLS5 4133	Buck	FLS1 2844	FLS0 2560	Speck	75%TX	_____
This buck's mother is a 404 granddaughter. He is showy with a mohair tail and has a fine, dense, ringlet kid fleece.							
42	JBR 0519	Buck	JBR 9973	JBR 9887	Ross	75%TX	_____
Another specific - need, open-faced buck offered by Robert Ross Buchholz. He is for one who wants to meat up the offspring from some fancy nannies. His sire was one of our high indexing bucks at the P.T. The dam is by the Betty Stewart 144 buck.							

YEARLING BUCKS

Lot#	GOAT ID	SEX	SIRE	DAM	SELLER	BREED	PRICE
43	FLS5 4277	Buck	FLS8 1810	FLS2 3062	Speck	100%TX	_____
<p>We love the beautiful ringlet kid fleece on this buck. This buck is smaller but has the kind of fleece we strive to produce. You can put size on goats with one cross, but quality fleeces take several generations. His grandsire on dam's side and sire on father's side is 1382. He will breed true.</p>							
44	JBR 0516	Buck	JBR 278	JBR 9971	Ross	37.5%TX	_____
<p>Soft fine young goat fleece, UN 2, SMT, B 1, Scrt 1+, WW. The sire is a fancy son of HLRS 99-300.</p>							
45	FLS5 4284	Buck	FLS8 1810	FLS2 3331	Speck	87.5%TX	_____
<p>This showy buck is long bodied and has a uniform, super kid fleece. His dam's grandfather is HLRS 422.</p>							
46	JBR 0518	Buck	JBR 0160	JBR 9667	Ross	50%TX	_____
<p>Extra lanolin. HN 1, Scrt 1-, WW. His mother is a big fine haired, open faced doe.</p>							
47	FLS5 4162	Buck	FLS9 2062	FLS2 3251	Speck	75%TX	_____
<p>Showy, with a mohair tail, he has an open face and is long bodied. He carries a fine, uniform, long stapled fleece. His mother is a 2224 daughter.</p>							
48	JBR 0510	Buck	JBR 0152	JBR 0280	Ross	62.5%TX	_____
<p>Extra lanolin, fine, UN 2, SMT, B 1, WW. The dam's mother was sired by B.S. 144. She was open face, Y3, UN 1.8 and dense.</p>							
49	FLS5 4064	Buck	FLS1 2844	FLS8 1952	Speck	75%TX	_____
<p>This big buck has correct horns and a uniform, fine, high yielding fleece. His mother is out of HLRS 422 and a stud doe FLS1-250. (249's sister)</p>							
50	JBR 0547	Buck	BL 2226	JBR 9564	Ross	100%TX	_____
<p>Shorn 3-3-06. Fancy with good scores. Extra lanolin, kid hair, UN 1.4, HN 1, Scrt 1+, WW. His 10 year old, open face mother still has an Ud 1, B 1 HK1.8, and WW.</p>							
51	FLS5 4245	Buck	FLS0 2392	FLS8 2036	Speck	87.5%TX	_____
<p>His brother is Lot #30 and a potential stud. This buck is smaller than his brother but carries a beautiful, ringlet, super kid fleece.</p>							

YEARLING BUCKS

Lot#	GOAT ID	SEX	SIRE	DAM	SELLER	BREED	PRICE
52	JBR 0532	Buck	JBR 0152	JBR 0021	Ross	43.75%TX	_____
Fine hair. UN 1.8, SMT, B 1, HN 1, Scrt 2- , WW. The dam scores B 1, Ud 1, HN 1. She is by JBR 9735.							
53	FLS5 4319	Buck	FLS1 2844	FLS8 1963	Speck	100%TX	_____
This is a big, open faced, long bodied buck with correct horns, and large testicles. He has a long stapled, fine fleece with lots of hair. We kept his brother as a stud buck.							
54	JBR 0528	Buck	JBR 0218	JBR 0121	Ross	62.5%TX	_____
Open face, fine, UN 1.8, SMT, B 1, Scrt 1+, and WW. His mother is open face, FY, Ud 1. She was sired by HLRS 60 and out of a big Hobson 76 doe. The sire (JBR 0218) was also the sire of Dalton's big buck kid that placed 4th at Kerrville and 2nd in the San Antonio open.							
55	FLS5 4286	Buck	FLS3 3407	FLS2 3160	Speck	87.5%TX	_____
This large, long bodied buck has an open face and carries a fine, soft, dense, uniform fleece.							
56	JBR 058	Buck	GILES	JBR T141	Ross	%TX	_____
No papers. Well covered, extra soft staple length, dense, Un 1.6, SMT, B 1, HN1, Scrt 1, WW. His commercial mother is big and Un 1.6.							
57	FLS5 4171	Buck	FLS0 2624	FLS1 2726	Speck	75%TX	_____
This buck carries a dense, uniform, soft fleece. His mother is a 2224 daughter. His brother is Lot #75.							
58	JBR 0501	Buck	JBR 0160	JBR 0162	Ross	62.5%TX	_____
A twin. Extra lanolin, open channel face cover, dense UN 1.8, SMT, B 1, HN 1, Scrt 1-. The dam is a fancy open face doe that placed 3rd at TAGRA. We are keeping his fancy twin sister.							
59	FLS5 4097	Buck	FLS9 2224	FLS9 2220	Speck	75%TX	_____
This long bodied buck has a beautiful, fine, very dense, long stapled, kid fleece. He is a brother to stud buck FLS1-2898 who has produced very well for us.							

YEARLING BUCKS

Lot#	GOAT ID	SEX	SIRE	DAM	SELLER	BREED	PRICE
60	JBR 0514	Buck	BL 2226	JBR 9982	Ross	%TX _____	
No papers. A fine, stylish yearling fleece with extra lanolin and density, open channel face cover, B 1, HN 1, with slight ridge toe, Scrt 1 indent, WW.							
61	FLS5 4063	Buck	FLS1 2844	FLS8 1952	Speck	75%TX _____	
This big buck has a dense, fine fleece with luster. He has large testicles. His brother is Lot #49. His granddam is FLS1-250 was a stud doe and sister to FLS1-249							
62	JBR 0546	Buck	BL 2226	JBR 0047	Ross	75%TX _____	
Well covered, UN 2, SMT, B 1, and Scrt 1+. His mother is a big open face show doe by HLRS 60.							
63	FLS5 4046	Buck	FLS1 2898	FLS0 2422	Speck	87.5%TX _____	
We like the fine ringlet, long staple fleece with kid hair on this buck. He is big, has a mohair tail, and large testicles. If his horns were wider, we would consider keeping him as a stud.							
64	FLS5 4038	Buck	FLS2 3136	FLS7 1651	Speck	75%TX _____	
This long bodied buck has large testicles, a mohair tail, and a fleece that is uniform, fine, dense, and soft. His twin sister is one of our keeper does.							
65	FLS5 4078	Buck	FLS0 2392	FLS8 1916	Speck	100%TX _____	
This buck carries a dense, long stapled fleece with luster. His mother is out of FLS4-607. His sister is Lot #12.							
66	FLS5 4294	Buck	FLS3 3505	FLS1 2830	Speck	81.25%TX _____	
This large buck has a long body, thick spring of rib, and an open face. His fleece is fine, soft, and uniform. His mother is a 404 granddaughter.							
67	FLS5 4042	Buck	FLS0 2350	FLS6 1348	Speck	100%TX _____	
This large bodied buck has a thick spring of ribs and large testicles. His fleece is dense.							
68	FLS5 4202	Buck	FLS0 2671	FLS2 3084	Speck	81.25%TX _____	
This long bodied buck has a mohair tail and a beautiful ringlet kid fleece that is long stapled and uniform. His mother is a 1382 granddaughter.							

YEARLING BUCKS

Lot#	GOAT ID	SEX	SIRE	DAM	SELLER	BREED	PRICE
69	FLS5 4211	Buck	FLS2 3322	FLS3 3619	Speck	78.125%TX	_____
<p>This is a goat with a thick spring of ribs and correct horns. He has a dense soft fleece. His sire was purchased by the Earwood family and was Champion buck everywhere he was shown in the 2005 show season. 3322 is a robust, correct bodied buck with an excellent fleece.</p>							
70	FLS5 4094	Buck	FLS9 2224	FLS6 1218	Speck	75%TX	_____
<p>This buck's mother is out of HLRS 422 that bred long staple. This buck carries a long staple, soft, fine, uniform fleece.</p>							
71	FLS5 4095	Buck	FLS0 2671	FLS9 2086	Speck	75%TX	_____
<p>He has an open face and a fine, uniform, ringlet fleece. We kept his full brother from 2002 as a stud buck.</p>							
72	FLS5 4110	Buck	FLS1 2898	FLS4 795	Speck	87.5%TX	_____
<p>This buck has a thick spring of ribs, level rump, and correct horns combined with a fine, uniform, soft fleece.</p>							
73	FLS5 4146	Buck	HLRS 2-606	FLS0 2679	Speck	50%TX	_____
<p>We love the body on this large, upstanding, long bodied buck with his level rump and thick spring of rib. He is showy with his mohair tail. His fleece is very dense and uniform, with yearling hair and 1+ grease. His mother is a 1382 daughter. Bred to fine hair does, he will produce kids with body and fleece.</p>							
74	FLS5 4141	Buck	FLS2 3136	FLS1 2897	Speck	100%TX	_____
<p>This is a large, long bodied buck with mohair tail and large testicles. He has a beautiful, ringlet, long stapled, kid fleece with 1+ grease, and good style and character. His mother is out of 2224.</p>							
75	FLS5 4170	Buck	FLS0 2624	FLS1 2726	Speck	75%TX	_____
<p>This buck has thick spring of ribs, correct horns, and large testicles. He has a fine, high yielding, soft fleece. He is a brother to Lot # 57.</p>							
76	FLS5 4124	Buck	FLS9 2224	FLS3 3675	Speck	93.75%TX	_____
<p>He has a nice, ringlet, long stapled, high yielding fleece. His scrotum is split 3 inches.</p>							

YEARLING BUCKS

Lot#	GOAT ID	SEX	SIRE	DAM	SELLER	BREED	PRICE
77	FLS5 4299	Buck	FLS0 2350	FLS0 2384	Speck	100%TX	_____
A big, upstanding buck with a mohair tail has an open face, thick spring of ribs, level rump, long deep body and correct horns. His fleece is dense and uniform.							
78	FLS5 4338	Buck	FLS1 2844	FLS9 2244	Speck	87.5%TX	_____
This big bodied buck has correct horns and lots of hair. His fleece is dense with long staple. His mother is a granddaughter of Hobson 76 and FLS1 249.							
79	FLS5 4168	Buck	FLS1 2844	FLS9 2299	Speck	75%TX	_____
This buck's fleece has luster and is soft and fine, with long staple. His mother is out of HLRS 422. His scrotum is split one half.							
80	FLS5 4187	Buck	FLS1 2763	FLS0 2500	Speck	87.5%TX	_____
This smaller buck has correct horns, a very soft, fine, ringlet, kid fleece. His mother is one of our stud does out of 1382.							
81	FLS5 4172	Buck	FLS3 3505	FLS0 2636	Speck	87.5%TX	_____
With an open face and thick spring of rib, this buck carries lots of hair. His fleece is dense, long stapled, and uniform. His mother is an 1810 daughter.							
82	FLS5 4161	Buck	FLS1 2844	FLS2 3277	Speck	87.5%TX	_____
This big buck has correct horns and a dense, fine fleece. His mother is out of 2224.							
83	FLS5 4324	Buck	FLS1 2763	FLS2 3155	Speck	87.5%TX	_____
This buck has a uniform, ringlet, kid fleece with good style and character. His mother is an 1810 daughter. His sister is Lot #26.							
84	FLS5 4212	Buck	FLS3 3505	FLS2 3226	Speck	87.5%TX	_____
This buck has a mohair tail and a fleece with very long staple length. His mother is a 607 granddaughter.							
85	FLS5 4265	Buck	FLS1 2763	FLS1 2977	Speck	87.5%TX	_____
This buck has a thick spring of rib, large testicles, and a dense fleece.							
86	FLS5 4306	Buck	FLS1 2844	FLS7 1591	Speck	75%TX	_____
His high yielding fleece has 1+ luster, long staple length, and is uniform in fineness. His mother is out of Hobson 80.							

YEARLING BUCKS

Lot#	GOAT ID	SEX	SIRE	DAM	SELLER	BREED	PRICE
87	FLS5 4069	Buck	FLS9 2224	FLS6 1342	Speck	75%TX	_____
He carries a very beautiful long staple ringlet fleece with good style and character and has a mohair tail.							
88	FLS5 4070	Buck	FLS3 3505	FLS9 2180	Speck	87.5%TX	_____
He has a dense, uniform fleece. His mother is a 1382 daughter.							
89	FLS5 4122	Buck	FLS9 2224	FLS3 3513	Speck	93.75%TX	_____
This buck is showy with a mohair tail, wide spring of ribs, level rump, and a beautiful, soft, fine, ringlet fleece with style and character. If his horns were more correct he would be stud potential. He does have the right kind of fleece we strive to produce.							
90	FLS5 4130	Buck	FLS3 3505	FLS1 2705	Speck	75%TX	_____
This buck combines a huge body, a thick spring of ribs, and a level rump with an open face and a dense, fine fleece. His mother is a 1382 granddaughter.							
91	FLS5 4137	Buck	FLS9 2062	FLS1 2754	Speck	75%TX	_____
This medium size buck has a level rump and a mohair tail. He has a fine, uniform, dense fleece. His mother is out of 2224.							
92	FLS5 4210	Buck	FLS2 3322	FLS3 3619	Speck	78.125%TX	_____
A medium sized buck, he carries a uniform, ringlet, kid fleece. See Lot #69 for description of his sire and full brother. His mother is out of 2898.							
93	FLS5 4260	Buck	FLS1 2763	FLS8 1934	Speck	75%TX	_____
This buck has a long stapled fleece and thick spring of rib like his grandfather Hobson 04. His fleece is uniform . We kept his sister this year.							
94	FLS5 4304	Buck	FLS0 2350	FLS9 2251	Speck	100%TX	_____
A showy buck, he has a dense, long stapled fleece with excellent luster. He is a medium sized buck.							
95	FLS5 4297	Buck	FLS0 2624	FLS1 2725	Speck	75%TX	_____
This buck has a long stapled, soft fleece. His mother's sire is 2224 and grandsire on dam's side is 404.							

YEARLING BUCKS

Lot#	GOAT ID	SEX	SIRE	DAM	SELLER	BREED	PRICE
------	---------	-----	------	-----	--------	-------	-------

96 FLS5 4177 Buck FLS0 2350 FLS1 2779 Speck 87.5%TX _____

An open faced buck with thick spring of ribs and long body. His fleece is very dense and carries 1+ grease.

97 FLS5 4223 Buck FLS0 2392 FLS3 3626 Speck 87.5%TX _____

This is an alert, upstanding, medium sized buck. He is showy with a level rump and a mohair tail. He has a long stapled, ringlet, kid fleece with good style and character. His mother is out of 2224.

98 FLS5 4129 Buck FLS1 2844 FLS2 3103 Speck 87.5%TX _____

This big buck has a thick spring of rib, level top, and large testicles. His fleece is very dense, fine, and soft.

99 FLS5 4058 Buck FLS3 3407 FLS9 2233 Speck 75%TX _____

This big, open faced buck has a thick spring of rib and a level rump. His fleece is fine and dense. His mother is a 404 grand daughter.

100 FLS5 4166 Buck HLRS 2-606 FLS3 3423 Speck 50%TX%TX _____

This buck has a very open face and correct body conformation. He is large, long bodied, with a thick spring of rib and a level rump. His uniform, yearling fleece shows extra long staple and will shear lots of hair. He will make a great commercial buck.



Preston Faris, Dalton & Franklin Buchholz. 1st Grand Champion Angora meat wether at San Angelo sponsored by the Mohair Council of America.

N . O . T . E . S
